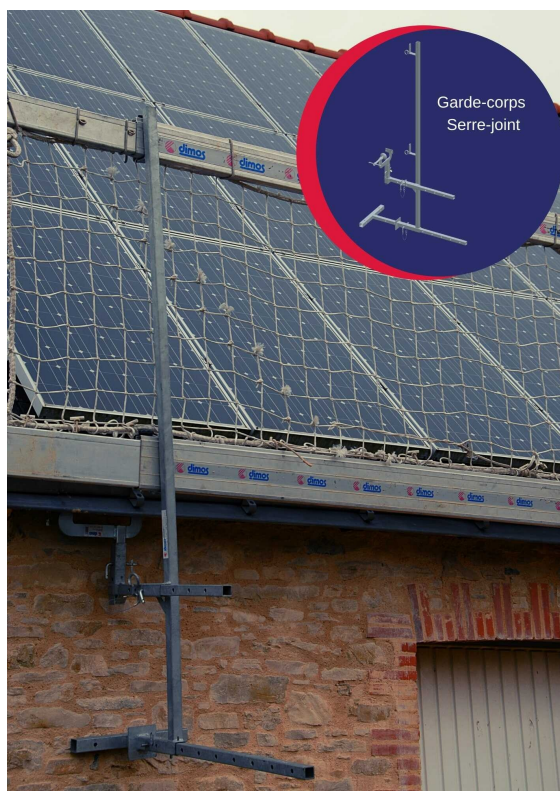


Technical sheet

Ref. 010114

9ml guardrail pack with clamp attachment



The guardrails are fixed on the side or at the bottom of the roof and carry the safety accessories (handrails, baseboards, nets) to provide full protection.

FEATURES

- Can be placed directly from the roof with personal protective equipment
- Light weight that reduces musculoskeletal disorders
- Low investment cost
- Short assembly time
- Low administrative formalities
- Not bulky
- Best Seller

SPECIFICATIONS

| | |
|-------------|------|
| Length (mm) | 1040 |
| Width (mm) | 9400 |
| Height (mm) | 2000 |
| Weight (kg) | 0 |

Technical description

Temporary gutter and side peripheral collective protection spaced at 3m max
 New site and renovation with a slope of 30° maximum
 Adjustment on gutter eaves adjustment
 Anchor point: With clamp
 Placement on rafter and all types of frame
 Full pack: 3ml / 9ml / 12ml

Actions : To work safely

Trades : Slate / Framework / Metal / Tile